



SERRA*[®]MAT[™]

Quality Matting Solutions

Mats

Obex[®] Atrium Plus[™]

Textile mats & runners
for circulation areas

PROUD DISTRIBUTOR OF *Miliken*



The Textile Matting Performance

The unsurpassed functionality of Atrium Plus™ is a result of the combination of two types of polyamide 6.6 high quality fibres – twisted together and heat set before tufting:

- The multi filaments capture moisture instantly when people walk on the textile.
- The mono filaments work as tough scrapers against dirt particles carried by shoes.

- The purposely open tufting construction provides room for dirt storage, whilst allowing easy dirt release for maintenance.

Atrium Plus™ rolls come with a high quality Everwear™ vinyl backing, which is easy to bond when fitted wall to wall or cut to desired length to produce runners or tailor made mats.

Installation

Atrium Plus™ mats and runners can be loose laid on the floor. For carpeted floors, the high quality rubber backing with Gripper® option is recommended. This provides excellent floor stability and superior border resistance.

When bonding Atrium Plus™ rolls to the sub floor, we advise the use of an appropriate adhesive that is compatible with Everwear™ vinyl backing. We recommend F. Ball F74 or a similar product depending on site conditions. Please refer to installation guidelines.

Maintenance

Daily vacuum cleaning is recommended to maintain full textile performance. Periodic cleaning by injection/extraction method is necessary to ensure durable efficiency (water temperature should not exceed 50°C). Dry cleaning method with chemical powder such as Millicare® is also suitable.

Maintenance frequency must be adapted to traffic and soiling conditions.

Suitable for intense traffic - up to 5,000 people per day.



Atrium Plus™ mats on rubber backing

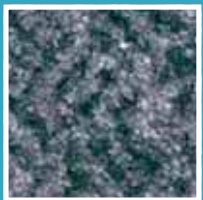
Atrium Plus™ is primarily designed for high traffic applications such as reception and circulation areas. Combining the unique patented Obex® textile with a non-staining and long lasting nitrile rubber backing, Atrium Plus™ mats can be simply loose laid on the floor. They offer a superior solution to protect floor coverings. A large choice of standard sizes is available, as well as special sizes and runners with four rubber borders.

5 Year
Wear
Guarantee

High
Quality
Rubber
Backing

Atrium Plus™ Colour Range

Atrium Plus™ comes in a range of functional and contemporary colours and is totally coordinated with the Obex® Forma™ modular tile system.



Ash
7010



Lagoon
7020



Sand
7012



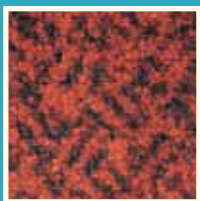
Bark
7016



Ammonite
7011



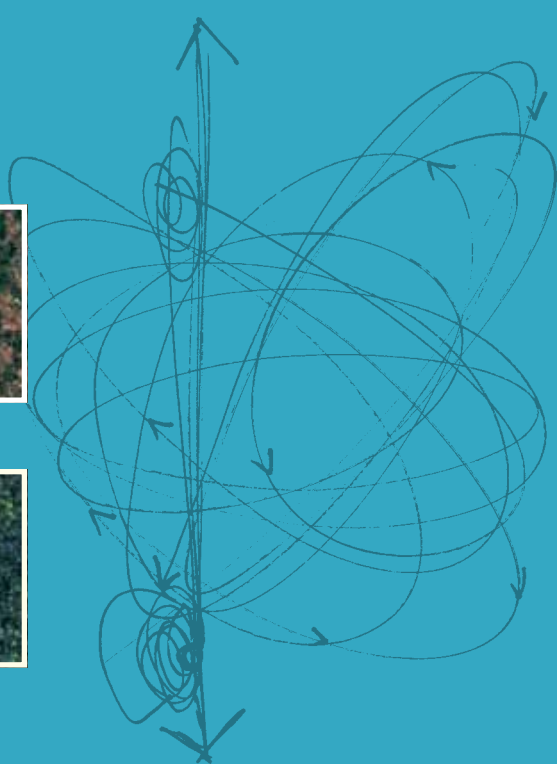
Twilight
7021



Volcano
7014



Fern
7018



Technical Specifications

Product Information	Atrium Plus™ Mats
Yarn type	100% Polyamide 6.6 - mono & multi filaments
Yarn construction	High Twist and Heat Set combination of mono & multi filaments
Textile weight	Approx. 1075 gms/m ²
Backing type	High quality rubber backing with Gripper® option recommended for carpeted floors (200 cm width available with flat back only)
Total thickness	Approx. 8 mm
Total weight	Approx. 3240 gms/m ² (Tolerance +/- 5%)
Textile Dyeing Technology	Millitron®
Textile light fastness	Xenotest ISO 105-B01: >6 on blue scale
Wear resistance	Vetterman drum test 66,000 cycles
Fire resistance classification	EN ISO 13501: D _{fl} -s1
Mat sizes in cm	Please refer to our price list
Guarantee	1 year guarantee against manufacturing defects and 5 year wear guarantee according to installation & maintenance recommendations.

Product Information	Atrium Plus™ Rolls
Roll size in cm	200x2500
Backing type	Everwear™ vinyl backing (2 mm thickness)
Total weight	Approx. 3575 gms/m ² (+/- 5%)
Fire resistance classification	EN ISO 13501: C _{fl} -s1
All other specifications are the same as for Atrium Plus™ mats	

All specifications are according to ISO 9001 Quality certification and ISO 14001 Environmental certification, and are subject to change to meet the ongoing improvements and innovation of our products.

Serra®MAT™ - A division of SERRA SERVICES (Pty) Ltd

Email : info@serra.co.za

Tel : +27 (0)11 334-7447

Fax : +27 (0)11 334-7165 or +27 (0)11 334-9858

Web : www.serra.co.za & www.serramat.co.za

Postal: PO Box 1217 Southdale, South Africa, 2135



www.serramat.co.za