



Quality Matting Solutions

Mats

**Walk Off® Mats**  
Plus

Performance that never fades

PROUD DISTRIBUTOR OF *Miliken*



## WOM® Plus – Solution Dyed Textile Mats

Research has shown that most of the dust and dirt in a building is brought in by pedestrian traffic. The Walk Off® Mats product line manufactured by Milliken provides an effective barrier against that type of floor contamination, stopping it literally at the door and minimising the hazard of slippery floors.

The WOM® Plus range consists of textile mats made of high twist and heat set nylon yarns, constructed using swinging needle tuft method to achieve its luxurious look, coming in a choice of 12 contemporary colours to fit all interior decorations.

The Walk Off® Mats offering is a professional mat product range constructed with high quality Everwear® solution dyed fibres combined with a longlasting washable rubber backing. Its unique cut pile construction offers a superior performance in terms of function and long-term appearance retention.

### Rubber Backing

WOM® Plus mats are manufactured with our long lasting nitrile rubber backing which offers three major benefits compared to other backing types:

1. strengthened rubber borders for increased resistance to tearing and better durability
2. heavyweight non-woven textile as primary backing for a better floor stability and resistance to rippling
3. lighter overall weight construction for improved ergonomics during handling in the laundry and in service – whilst respecting the environment.

Personalised customer labelling is available on borders and on the back of the mat.

### Backing Options

Our high quality rubber backing is available with Gripper® (recommended for use on carpeted floors) or flat back.

There is a 3 mm rubber thickness option (with or without borders) for specific installation requirements such as recessed floors or mat wells. To order the correct mat size, you need to add 10cm on both width and length of the measured mat well - in order to allow for shrinkage during washing before fitting the mat on site. Please contact our Customer Service at [matsinfoeurope@milliken.com](mailto:matsinfoeurope@milliken.com) or your local representative for further details.

For areas with high number of footfalls and wheeled traffic, such as food stores, shopping centres and airports, the Megahold™ backing option is recommended (please refer to the specific Megahold™ brochure for complete information).



## Function

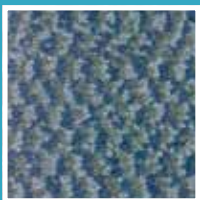
WOM® mats are specially designed to pick up dirt and moisture in heavy traffic areas and buildings where a high level of cleanliness is critical. Because they can withstand washing at high temperatures, WOM® mats can also be used in industrial applications where heavy soiling can occur. For details about washing procedure, please consult our Processing & Handling Guidelines at [www.millikenwom.com](http://www.millikenwom.com)

## Appearance Retention

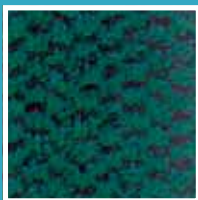
The pre-shrunk Everwear® yarn has been specially developed to ensure that the mat retains its functionality and appearance after many wash cycles – thus minimizing the difference between new and old mats in service. WOM® mats have a high level of UV resistance and are extremely colourfast. They will not pick up colour from other solution dyed mats during the wash process, if washed according to the recommendations in our Processing & Handling Guidelines.

## WOM® Plus - Colour range

Textile mats tufted using three colours of high twist nylon yarn.



Blue Shale  
2306



Emerald  
2314



Garnet  
2307



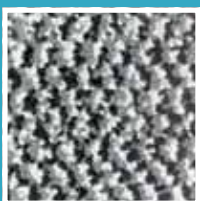
Granite  
2302



Ironstone  
2310



Basalt blue  
2301



Marble  
2303



Moonstone  
2309



Onyx  
2311



Peeble  
2305



Sandstone  
2304



Amber  
2361

# Technical Specifications WOM<sup>®</sup> Plus Mats

Product construction	Solution dyed high twist & heat set nylon tufted cut pile with 100% nitrile rubber backing
Sizes in cm (ca.)	Please refer to our Price List
Fabric weight (ca.)	740 gr/m <sup>2</sup>
Total weight (ca.)	2240 gr/m <sup>2</sup>
Pile height	10 mm
Border thickness	2.1 mm
UV resistance	ISO 105-B02 test, rated 8 on blue scale (maximum mark)
Fire classification	ISO 13501 test, rated E <sub>fl</sub>
Electrical behaviour	EN ISO 14041 test, Antistatic
Energy <sup>®</sup> backing	Allows optimum reduction of water during extraction process (reduces drying time)
Laundrying	Please consult our Handling and Processing Guidelines for details
Warranty	Please refer to our written guarantee

All specifications are according to ISO 9001 Quality certification and ISO 14001 Environmental certification, and are subject to change to meet the ongoing improvements and innovation of our products.

**Serra<sup>®</sup>MAT<sup>™</sup>** - A division of SERRA SERVICES (Pty) Ltd

Email : [info@serra.co.za](mailto:info@serra.co.za)

Tel : +27 (0)11 334-7447

Fax : +27 (0)11 334-7165 or +27 (0)11 334-9858

Web : [www.serra.co.za](http://www.serra.co.za) & [www.serramat.co.za](http://www.serramat.co.za)

Postal: PO Box 1217 Southdale, South Africa, 2135



[www.serramat.co.za](http://www.serramat.co.za)